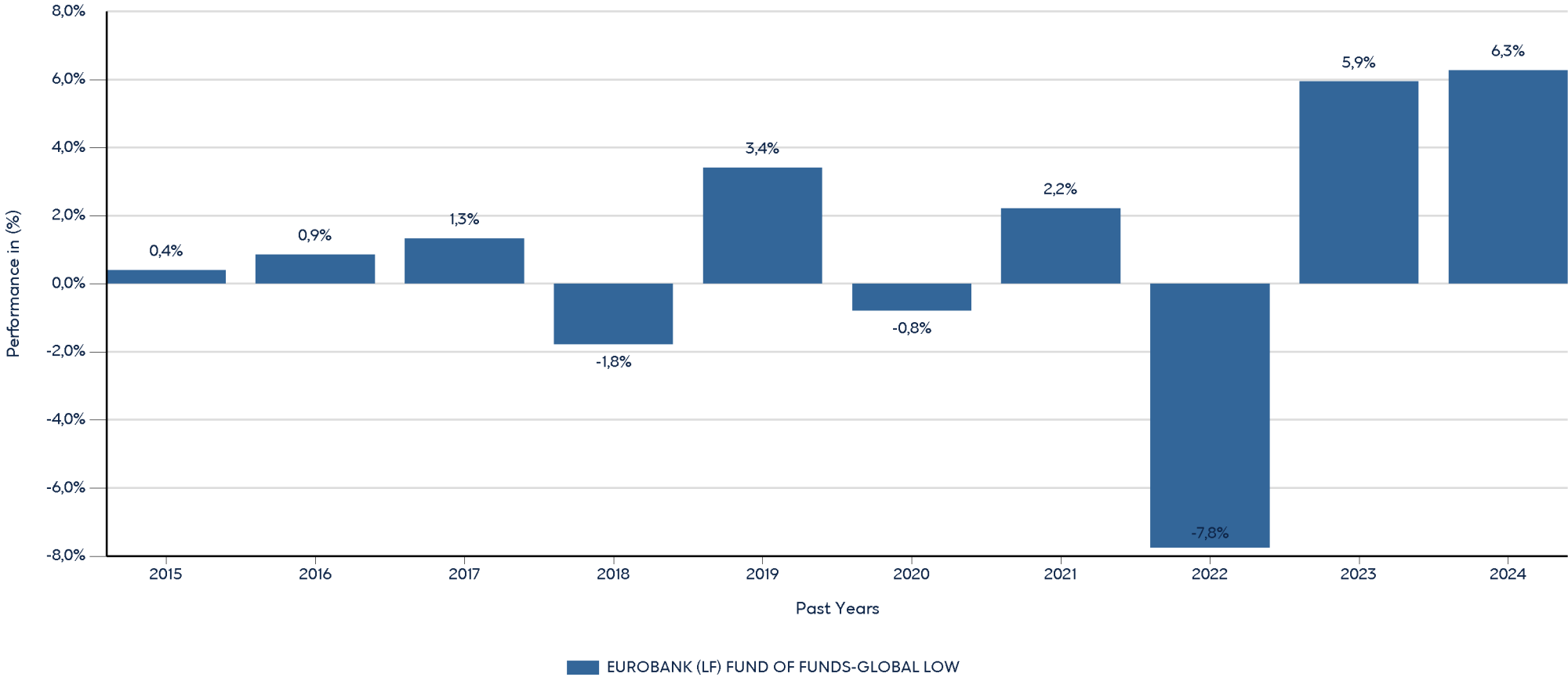


Product
EUROBANK (LF) FUND OF FUNDS-GLOBAL LOW
ISIN: LU0956610256

Past performance is not a reliable indicator of future performance. Markets could develop very differently in the future.
This chart shows the fund's performance as the percentage loss or gain per year over the last 10 years. It can help you to assess how the fund has been managed in the past.

Past Performance

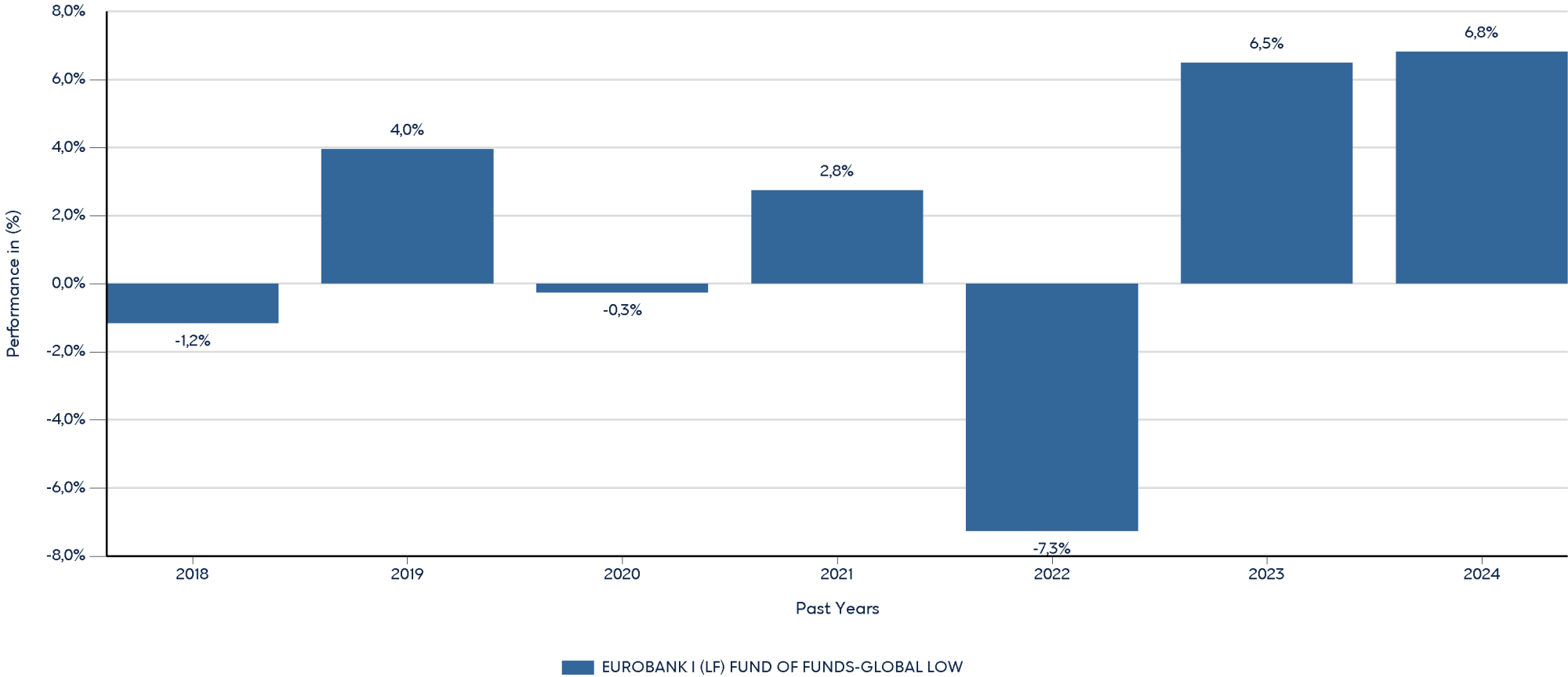


- Performance is shown after deduction of ongoing charges. Any entry and exit charges are excluded from the calculation.
- The chart shows the Investment Product's annual performance in EUR for each calendar year over the period 2015-2024. This Investment Product was launched in 16/9/2013.
- Further information about this fund are available on the web site www.eurobankam.gr.

Product
EUROBANK I (LF) FUND OF FUNDS-GLOBAL LOW
ISIN: LU0956610413

Past performance is not a reliable indicator of future performance. Markets could develop very differently in the future.
This chart shows the fund's performance as the percentage loss or gain per year over the last 7 years. It can help you to assess how the fund has been managed in the past.

Past Performance

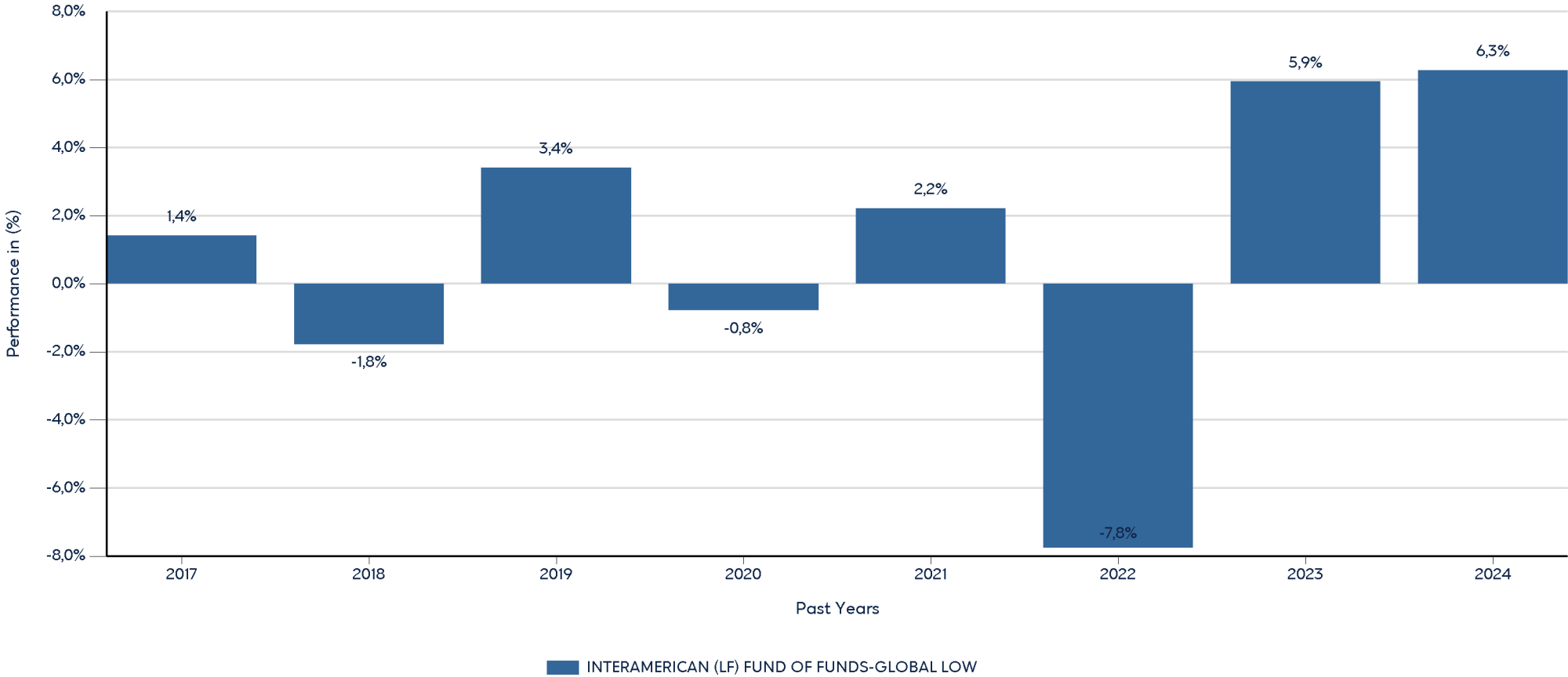


- Performance is shown after deduction of ongoing charges. Any entry and exit charges are excluded from the calculation.
- The chart shows the Investment Product's annual performance in EUR for each calendar year over the period 2018-2024. This Investment Product was launched in 19/4/2018.
- Further information about this fund are available on the web site www.eurobankam.gr.

Product
INTERAMERICAN (LF) FUND OF FUNDS-GLOBAL LOW
ISIN: LU1244597024

Past performance is not a reliable indicator of future performance. Markets could develop very differently in the future.
This chart shows the fund's performance as the percentage loss or gain per year over the last 8 years. It can help you to assess how the fund has been managed in the past.

Past Performance

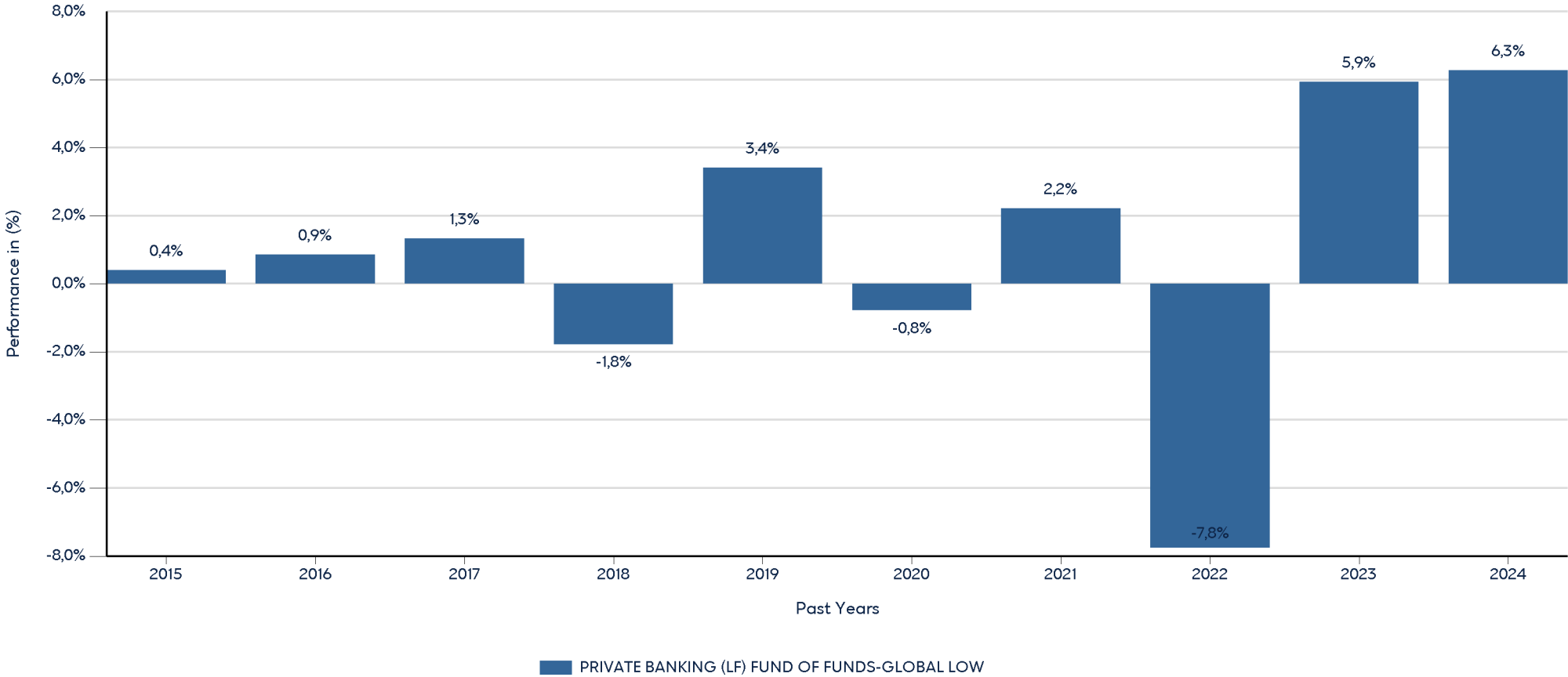


- Performance is shown after deduction of ongoing charges. Any entry and exit charges are excluded from the calculation.
- The chart shows the Investment Product's annual performance in EUR for each calendar year over the period 2017-2024. This Investment Product was launched in 27/1/2017.
- Further information about this fund are available on the web site www.eurobankam.gr.

Product
PRIVATE BANKING (LF) FUND OF FUNDS-GLOBAL LOW
ISIN: LU1102788616

Past performance is not a reliable indicator of future performance. Markets could develop very differently in the future.
This chart shows the fund's performance as the percentage loss or gain per year over the last 10 years. It can help you to assess how the fund has been managed in the past.

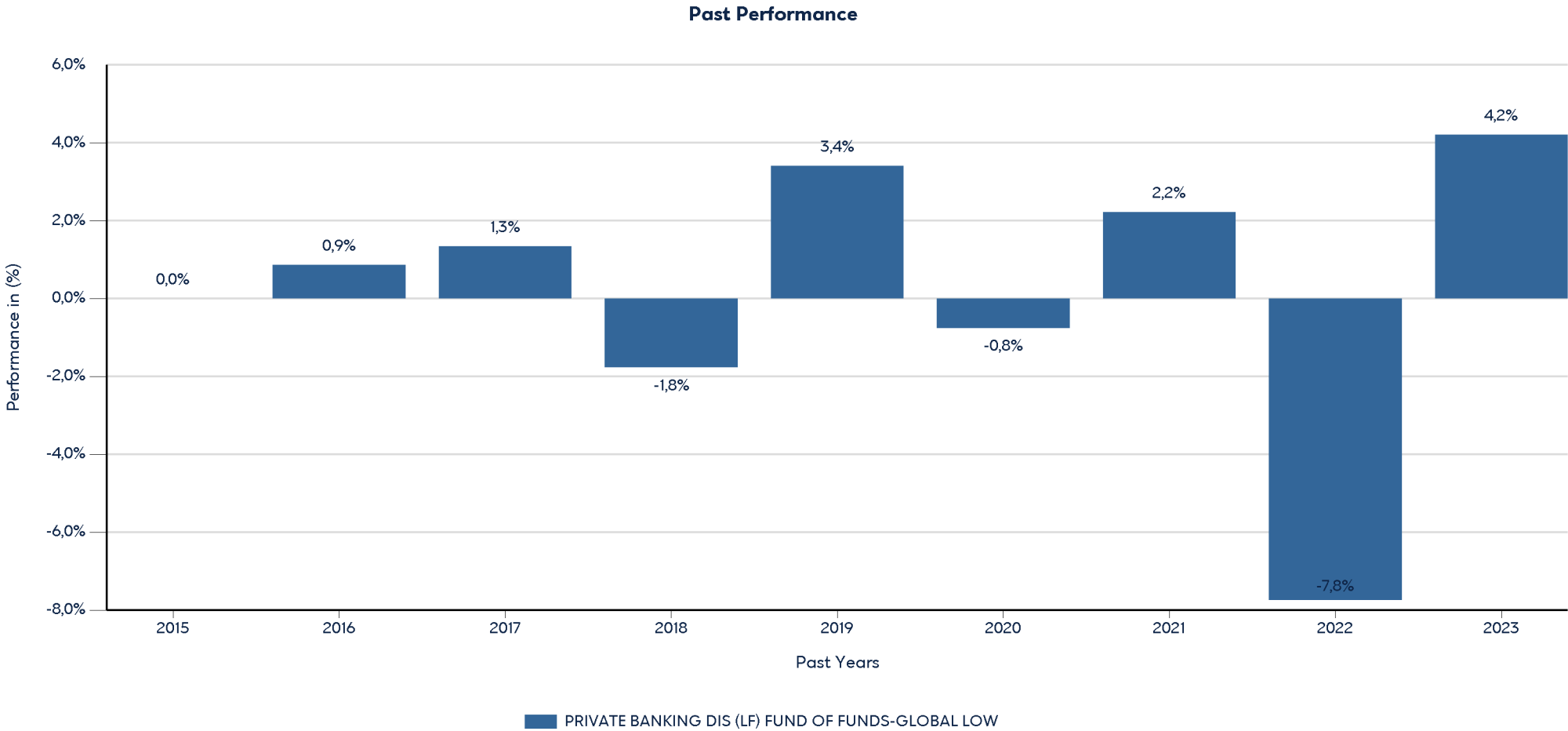
Past Performance



- Performance is shown after deduction of ongoing charges. Any entry and exit charges are excluded from the calculation.
- The chart shows the Investment Product's annual performance in EUR for each calendar year over the period 2015-2024. This Investment Product was launched in 10/10/2014.
- Further information about this fund are available on the web site www.eurobankam.gr.

Product
PRIVATE BANKING DIS (LF) FUND OF FUNDS-GLOBAL LOW
ISIN: LU1195534158

Past performance is not a reliable indicator of future performance. Markets could develop very differently in the future.
This chart shows the fund's performance as the percentage loss or gain per year over the last 10 years. It can help you to assess how the fund has been managed in the past.

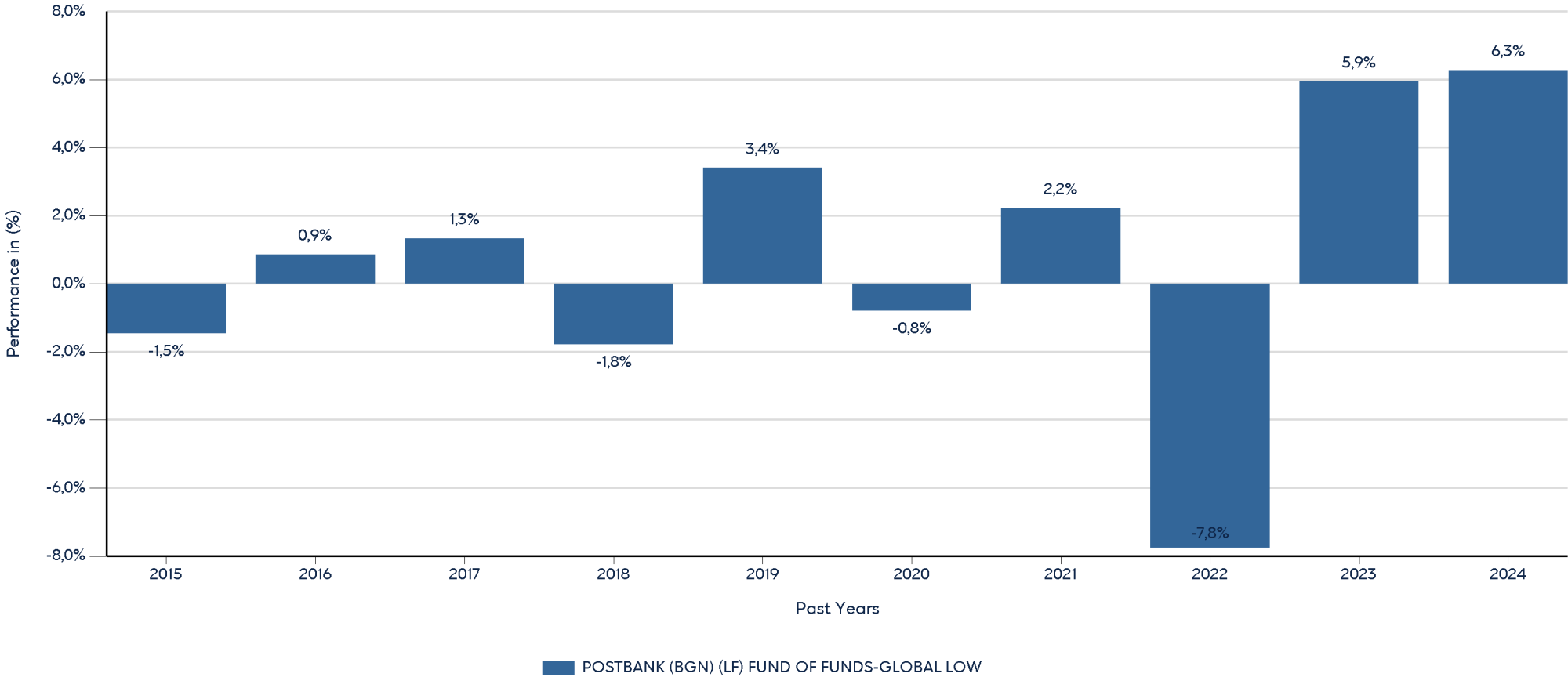


- Performance is shown after deduction of ongoing charges. Any entry and exit charges are excluded from the calculation.
- The chart shows the Investment Product's annual performance in EUR for each calendar year over the period 2015-2023. This Investment Product was launched in 5/6/2015.
- Further information about this fund are available on the web site www.eurobankam.gr.

Product
POSTBANK (BGN) (LF) FUND OF FUNDS-GLOBAL LOW
ISIN: LU1199652337

Past performance is not a reliable indicator of future performance. Markets could develop very differently in the future.
This chart shows the fund's performance as the percentage loss or gain per year over the last 10 years. It can help you to assess how the fund has been managed in the past.

Past Performance



- Performance is shown after deduction of ongoing charges. Any entry and exit charges are excluded from the calculation.
- The chart shows the Investment Product's annual performance in BGN for each calendar year over the period 2015-2024. This Investment Product was launched in 17/4/2015.
- Further information about this fund are available on the web site www.eurobankam.gr.